

iMS4 Tools: Firmware Revision and Upgrade

1: Firmware Revision & Upgrade

To check SDK and IMS4 build revision.

Using the Isomet Studio GUI, go to **Tool bar > Help > About**

2: Firmware Upgrade

Procedure for updating the iMS -P Controller Firmware

Step1: Ensure SDK version v1.8.0 (or later) is installed.

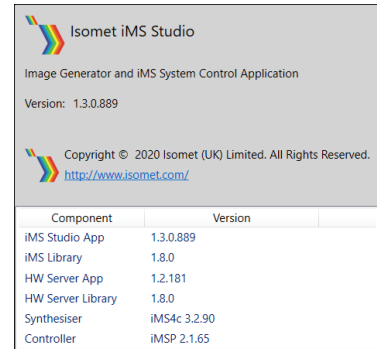
http://www.isomet.com/ims4_sw.html

Step2: Download and Unzip the firmware update file into a known location.

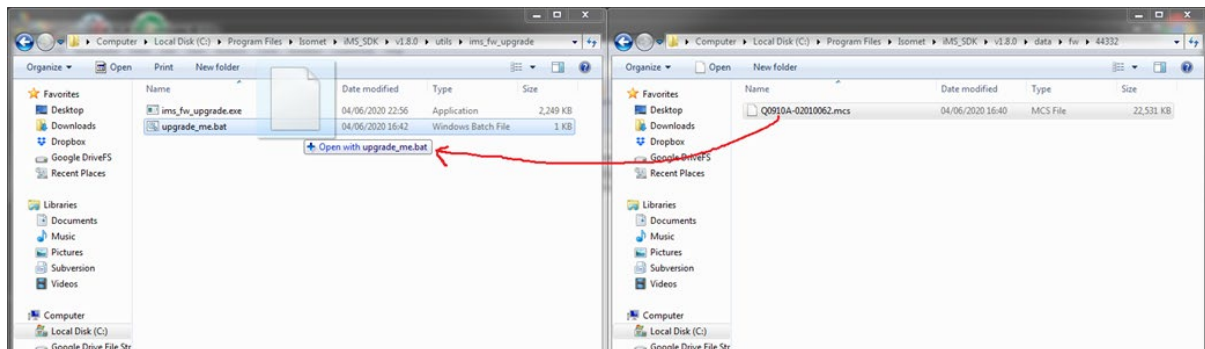
Navigate to this folder and open an Explorer Windows.

Find the **update_me.bat**

Find the new firmware: ***.mcs file.**



- 'Drag and drop' the ***.mcs** file and place on top of the '**upgrade_me.bat**' script. Follow the instructions.
- When complete, turn off, pause and then turn on the DC power to the iMS.



*As of 2021-07-16, the latest upgrade file isv2_1_69_upgrade.mcs

Notes:

- The firmware update procedure can take 5 minutes or more to download and update.
- Should the procedure time-out it will necessary to re-try.
- Cycle the iMS4-P DC power between update attempts.
- Update can be made through either a USB or GbE connection.
- If the update fails, the iMS4 will default back to the factory installed firmware revision.